



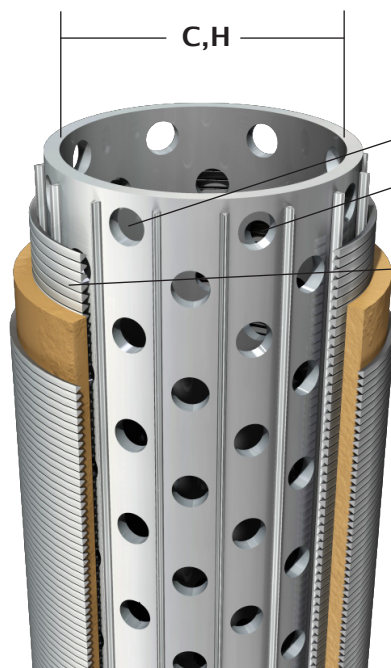
FEATURES:

- Internal quality control of wrap wire specifications.
- Pre-packed screen cartridges are available in standard service 316LSS or CRA alloy as required.
- Excellent choice for marginal reservoirs requiring economical sand control options.
- The dual jacket design and packing process insures a void-free, concentric and uniform pack annulus.

BENEFITS:

- Provides a measure of protection against erosional forces and voids during sand placement procedures.
- A cost effective alternative to premium diffusion bonded screens.
- Suitable for stand alone applications as well as High Rate Water Packs (HRWP) and Frac Packs (FP) in cased or open hole completions.
- The spherical Econo-Prop pack material provides excellent compaction properties with high permeability for maximum flow characteristics.
- Extremely damage resistant.

SIZE	BASE PIPE						Inlet Area					
	A	B	C		D	F	G		H	I		
	OD	Coupling OD	Weight	ID	Max. Perforation - Flow Area		Product		Base Pipe Flow	.006" Slot	.008" Slot	.012" Slot
Unit	in	in	lb/ft	in	Size (in)	in ² /ft	lb/ft	OD (in)	in ²	(sq. in/ft)		
2-3/8"	2.375	2.875	4.6	1.995	0.375	5.299	14.00	3.15	3.126	7.422	9.694	13.971
2-7/8"	2.875	3.500	6.4	2.441	0.375	5.299	16.00	3.60	4.678	8.482	11.079	15.967
3-1/2"	3.500	4.250	9.2	2.867	0.375	6.624	20.00	4.25	6.456	10.014	13.079	18.850
4"	4.000	4.750	11.6	3.428	0.375	7.949	22.00	4.75	9.229	11.192	14.618	21.067
4-1/2"	4.500	5.000	13.5	3.920	0.375	9.274	25.00	5.25	12.069	12.370	16.157	23.285
5"	5.000	5.563	15.0	4.408	0.375	9.274	28.00	5.75	15.261	13.548	17.696	25.502
5-1/2"	5.560	6.050	17.0	4.892	0.375	10.598	32.00	6.25	18.796	14.726	19.234	27.720
6-5/8"	6.625	7.390	24.0	5.921	0.375	11.923	42.00	7.40	27.535	17.436	22.773	32.820
7"	7.000	7.657	23.0	6.366	0.375	13.248	50.00	7.75	31.829	18.261	23.851	34.373



- C** - Base Pipe Inner Dimension
- D** - Base Pipe Perforation Diameter
- F** - Max. Perforation Flow Area
- H** - Base Pipe Flow Area
- I** - Inlet Area

www.deltascreens.com

P.O. Box 842397 Houston, Texas 77284
 main: 713-856-0300 fax: 713-856-0303