



DeltaWeldTM WIRE WRAP SCREEN



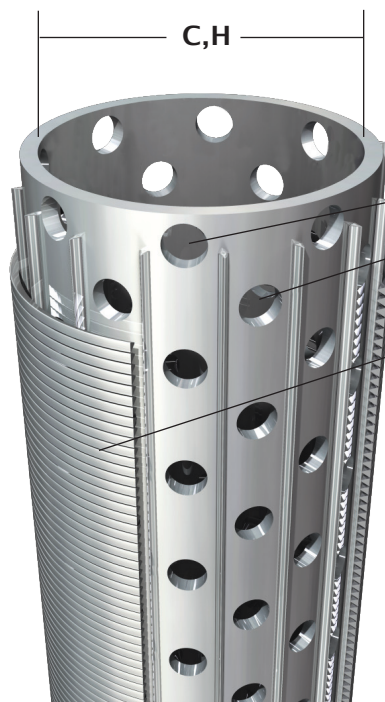
FEATURES:

- Internal control of wire specifications and quality.
- Complete range of sizes including TT applications.
- Jackets available in standard service 316LSS or CRA alloy as required.
- Wire dimensions and configurations are available for various applications from stand alone to GP deployments.
- Wire profiles available for heavy duty design for maximum erosion resistance.

BENEFITS:

- Minimum product lead times.
- Most cost effective screen alternative.
- Suitably designed for stand alone as well as cased hole, open hole and gravel pack completions.
- Strong base pipe attachment to withstand high mechanical loads.

SIZE	BASE PIPE						Inlet Area					
	A	B	C		D	F	G		H	I		
	OD	Coupling OD	Weight	ID	Max. Perforation - Flow Area		Product		Base Pipe Flow	.006" Slot	.008" Slot	.012" Slot
Unit	in	in	lb/ft	in	Size (in)	in ² /ft	lb/ft	Max. OD (in)	in ²	(sq. in/ft)		
2-3/8"	2.375	2.875	4.6	1.995	0.375	5.299	8.50	2.97	3.126	6.998	9.140	13.173
2-7/8"	2.875	3.500	6.4	2.441	0.375	5.299	11.00	3.47	4.678	8.176	10.679	15.390
3-1/2"	3.500	4.250	9.2	2.867	0.375	6.624	15.00	4.11	6.456	9.684	12.648	18.229
4"	4.000	4.750	11.6	3.428	0.375	7.949	18.00	4.61	9.229	10.862	14.187	20.446
4-1/2"	4.500	5.000	13.5	3.920	0.375	9.274	21.50	5.12	12.069	12.064	15.757	22.708
5"	5.000	5.563	15.0	4.408	0.375	9.274	22.50	5.62	15.261	13.242	17.295	24.926
5-1/2"	5.500	6.050	17.0	4.892	0.375	10.598	25.25	6.13	18.796	14.444	18.865	27.188
6-5/8"	6.625	7.390	24.0	5.921	0.375	11.923	34.00	7.26	27.535	17.106	22.343	32.200
7"	7.000	7.657	23.0	6.366	0.375	13.248	34.00	7.64	31.829	18.001	23.512	33.885



- C** - Base Pipe Inner Dimension
- D** - Base Pipe Perforation Diameter
- F** - Max. Perforation Flow Area
- H** - Base Pipe Flow Area
- I** - Inlet Area

www.deltascreens.com

P.O. Box 842397 Houston, Texas 77284
main: 713-856-0300 fax: 713-856-0303