



DeltaElite[™] PREMIUM DIFFUSION BONDED SCREEN



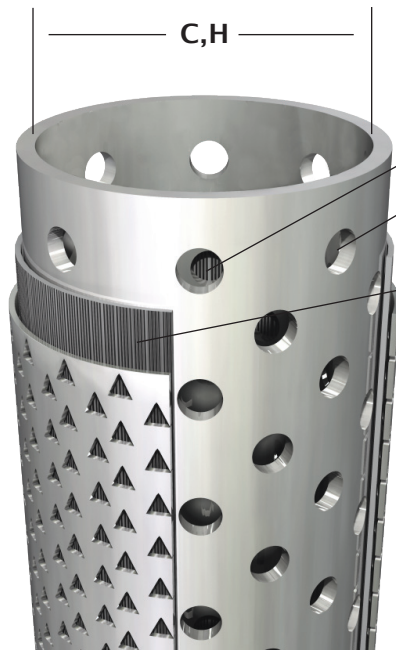
FEATURES:

- The filtration media is diffusion bonded SS material made under the most stringent manufacturing controls (also available in CRA materials).
- The media pores have a fixed geometry resisting movement under pressure.
- A full range of micron ratings is available and the media may be customized to suit specific reservoir characteristics.
- The filtration media is constructed to provide maximum open area for unrestricted flow.
- Full range of sizes – TT up to open hole horizontals.

BENEFITS:

- Extremely damage resistant - maintains sand control under high compaction loads.
- Designs available with high dirt holding capacity for heavy oil applications.
- Well suited for deployments with ICD applications in horizontal wellbores.
- Chemically and thermally stable for HT/HP applications.
- Suitable for stand alone or GP deployments.
- Excellent screen platform for high profile completions and projects.

SIZE	BASE PIPE								Max. Permeability			
	A	B	C		D	F	G		H	I		
	OD	Coupling OD	Weight	ID	Max. Perforation - Flow Area		Product		Base Pipe Flow	125	175	250
Unit	in	in	lb/ft	in	Size (in)	in ² /ft	lb/ft	OD (in)	in ²	(scf/min)		
2-3/8"	2.375	2.875	4.6	1.995	0.375	5.299	9.00	2.93	3.126	690	875	950
2-7/8"	2.875	3.500	6.4	2.441	0.375	5.299	11.00	3.43	4.678	690	875	950
3-1/2"	3.500	4.250	9.2	2.867	0.375	6.624	14.00	4.05	6.456	690	875	950
4"	4.000	4.750	11.6	3.428	0.375	7.949	17.00	4.55	9.229	690	875	950
4-1/2"	4.500	5.000	13.5	3.920	0.375	9.274	18.00	5.05	12.069	690	875	950
5"	5.000	5.563	15.0	4.408	0.375	9.274	22.00	5.57	15.261	690	875	950
5-1/2"	5.500	6.050	17.0	4.892	0.375	10.598	25.00	6.07	18.796	690	875	950
6-5/8"	6.625	7.390	24.0	5.921	0.375	11.923	33.00	7.20	27.535	690	875	950
7"	7.000	7.657	23.0	6.366	0.375	13.248	33.00	7.60	31.829	690	875	950



- C** - Base Pipe Inner Dimension
- D** - Base Pipe Perforation Diameter
- F** - Max. Perforation Flow Area
- H** - Base Pipe Flow Area
- I** - Inlet Area

www.deltascreens.com

P.O. Box 842397 Houston, Texas 77284
main: 713-856-0300 fax: 713-856-0303